

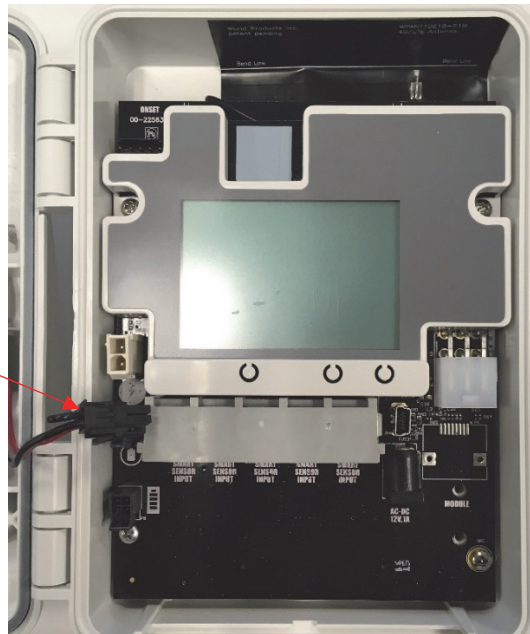
## Requirements:

- HOBO RX2100 MicroRX Station
- USB cable
- HOBOware® 3.7.17 or higher
- User-provided data plan and SIM requirements:
  - Micro SIM for 4G LTE Network; supports UMTS/HSPA+ at 800, 850, 900, 1800, 1900, or 2100 MHz and LTE at 700, 800, 850, 900, 1800, 1900, 2100, or 2600 MHz
  - The SIM must already be activated and unlocked
  - APN for the associated carrier

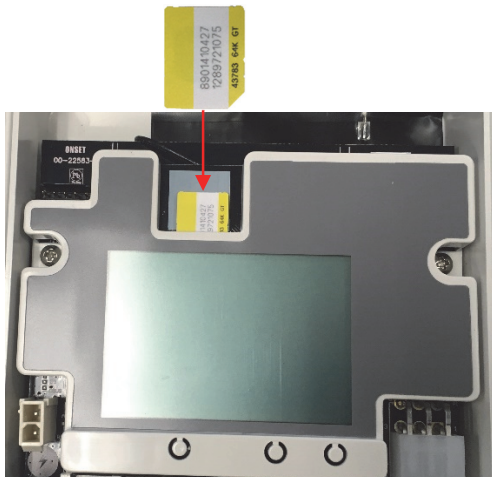
## To install a SIM card:

1. Make sure the station is powered down. Unplug the battery cable and the solar panel cable and AC adapter (if applicable).

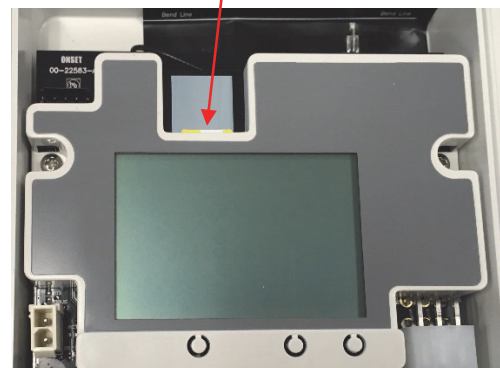
Battery disconnected;  
no charging device  
plugged in



2. Carefully slide the micro SIM card into the SIM port and gently push it into place (you will hear a click when it is properly seated).



Micro SIM installed



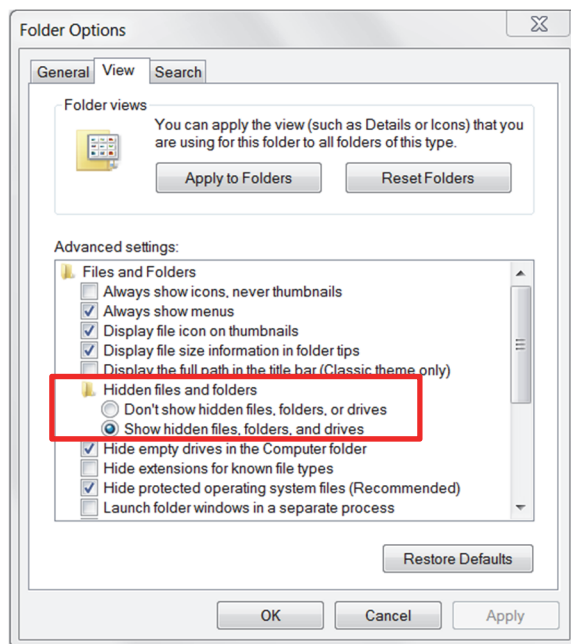
3. Plug in the battery and any charging device (if applicable). "Initializing System" will blink on the LCD while the system powers up. Wait until "System" appears with a checkmark.
4. Connect the station to the computer with a USB cable. It may take a few minutes for the device driver to be installed on Windows® if this is the first time connecting the device to the computer.
5. Make sure HOBOWare is closed.
6. Open the HOBOWare properties file (app.properties).

On Macintosh®, use Finder to right-click HOBOWare and choose Show Package Contents. Click Contents, then Resources, then Java. Open app.properties in TextEdit or a similar text editor.

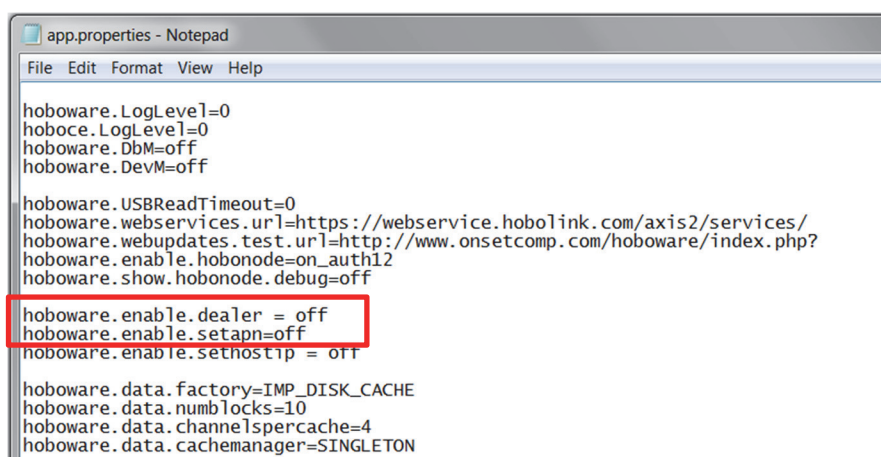
On Windows, go to c:\ProgramData\Onset Computer Corporation\HOBOWare and open app.properties in Notepad or a similar text editor.

If you do not see this directory on Windows, you may need to show hidden files and folders. To do this:

- a. Click the Start button and open the Control Panel.
- b. On Windows 10, click Appearance and Personalization and then File Explorer Options.  
On Windows 8, click Appearance and Personalization and then Folder Options.  
On Windows 7, click Folder Options.
- c. Click the View Tab.
- d. Under Advanced settings, click "Show hidden files and folders" or "Show hidden files, folders, and drives" and then click OK.



7. In the app.properties file, look for the two settings “hoboware.enable.dealer” and “hoboware.enable.setapn” as circled below.



```

app.properties - Notepad
File Edit Format View Help

hoboware.LogLevel=0
hoboce.LogLevel=0
hoboware.DbM=off
hoboware.DevM=off

hoboware.USBReadTimeout=0
hoboware.webservices.url=https://webservice.hobolink.com/axis2/services/
hoboware.webupdates.test.url=http://www.onsetcomp.com/hoboware/index.php?
hoboware.enable.hobonode=on_auth12
hoboware.show.hobonode.debug=off
hoboware.enable.dealer = off
hoboware.enable.setapn=off
hoboware.enable.sethostip = off

hoboware.data.factory=IMP_DISK_CACHE
hoboware.data.numblocks=10
hoboware.data.channelspercache=4
hoboware.data.cachemanager=SINGLETON

```

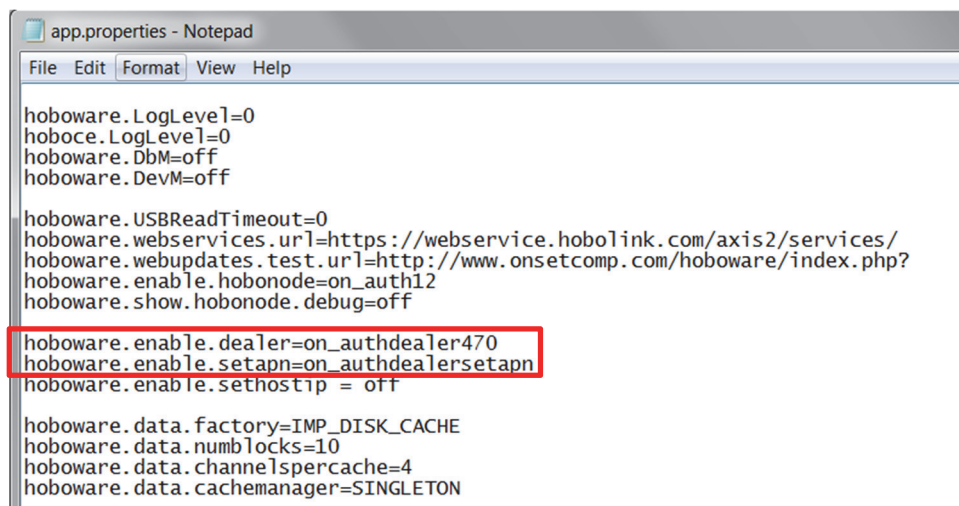
8. For hoboware.enable.dealer = off, replace “off” with “on\_authdealer470”.  
For hoboware.enable.setapn = off, replace “off” with “on\_authdealersetapn”.

The two lines should read as follows (as circled in the example below):

```

hoboware.enable.dealer=on_authdealer470
hoboware.enable.setapn=on_authdealersetapn

```



```

app.properties - Notepad
File Edit Format View Help

hoboware.LogLevel=0
hoboce.LogLevel=0
hoboware.DbM=off
hoboware.DevM=off

hoboware.USBReadTimeout=0
hoboware.webservices.url=https://webservice.hobolink.com/axis2/services/
hoboware.webupdates.test.url=http://www.onsetcomp.com/hoboware/index.php?
hoboware.enable.hobonode=on_auth12
hoboware.show.hobonode.debug=off
hoboware.enable.dealer=on_authdealer470
hoboware.enable.setapn=on_authdealersetapn
hoboware.enable.sethostip = off

hoboware.data.factory=IMP_DISK_CACHE
hoboware.data.numblocks=10
hoboware.data.channelspercache=4
hoboware.data.cachemanager=SINGLETON

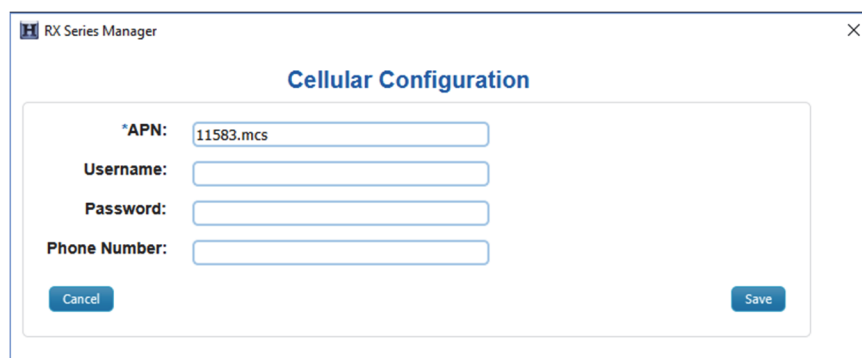
```

9. Save the app.properties file.
10. Open HOB0ware.
11. From the Device menu, select Manage RX Series Logger.

12. In the RX Series Manager, click the Actions button circled below and select Network Access.



13. Enter the APN for the SIM card. You can also enter a username, password, and phone number as needed.



14. Click Save and then click Done.
15. Click Close in the RX Series Manager.
16. Disconnect the USB cable from the station. It should now be ready to connect with HOBOLink®. Refer to the HOBO MicroRX Station Manual at [www.onsetcomp.com/manuals/support/23808-rx2100-manual](http://www.onsetcomp.com/manuals/support/23808-rx2100-manual) for details on setting up and configuring the station.