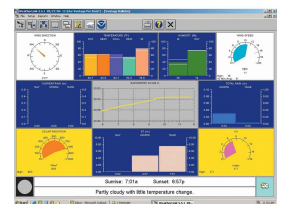
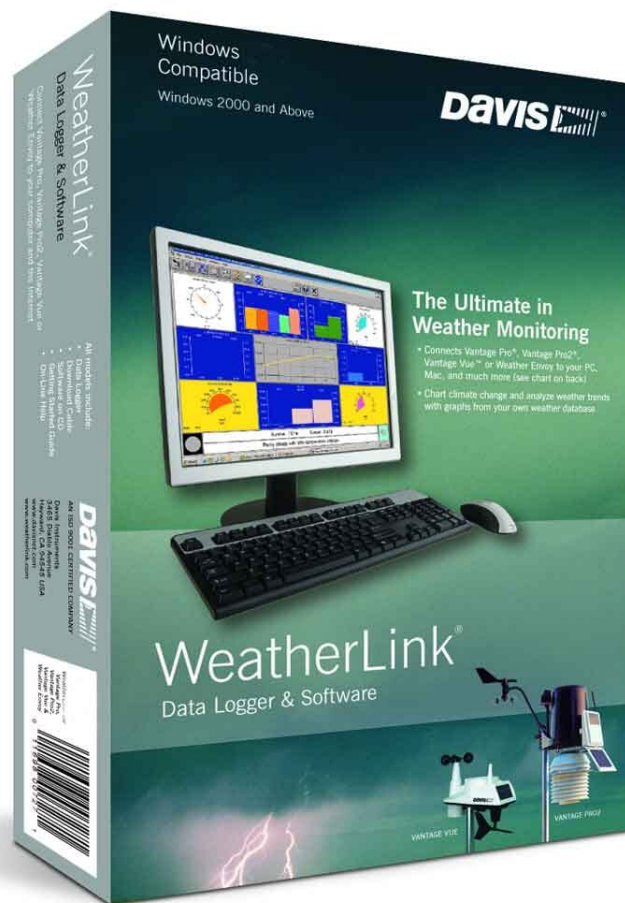




DISCONTINUED: WeatherLink APRS

Product Images



Short Description

Software and data logger with APRS for Vantage Pro2. 2-3 week lead time.

Description

Data logger and software required to connect your Vantage Pro2 to a computer. The logger fits neatly into the weather station console or Envoy, storing weather data even when it's not connected to your PC. Later, download the data and use the software to create graphs, generate summaries, and more.

Choosing a logging interval of 1, 5, 10, 15, 30, 60, or 120 minutes allows the logger store up to six months of data before downloading.

Additional Information

Promotion	This product has been discontinued. See our full range of full WeatherLink range
Brand	Davis Instruments
Explanation	<p>For ham radio operators, including storm chasers and volunteer weather watchers. Connects a Vantage console, or Weather Envoy to a ham radio or TNC modem for instant transmission of both your location and the local weather conditions via APRS (Automated Position Reporting System). Data submitted via APRS lets emergency personnel map changing weather conditions in real-time, and also helps the National Weather Service develop improved weather prediction models.</p> <p>At the same time the data logger simultaneously logs and stores the data, which can later be downloaded to your PC for all the graphing, charting, and analysis included with our standard WeatherLink.</p> <p>Expanded Reporting</p> <ul style="list-style-type: none">• More Weather Data. View weather information not available on the console, including heating degree days, cooling degree days, and heating demand.• Optional Sensor Reporting. With optional UV and solar radiation sensors, get details on sunburn risk and solar energy.• Moon Phase. With Vantage Pro2 and Vantage Vue, you can see the phase of the moon right on the console. <p>Analysing, Storing and Sharing Your Weather Data</p> <ul style="list-style-type: none">• Create Your Own Reports. Data can be exported to most popular spreadsheets, databases, and word processing programs.• Weather Website. Create a weather website or post weather conditions to a LAN. Add graphs, text lines, or scrolling ticker tapes, and upload other files (such as webcam images) along with weather data.• Weather Around the World. Join other weather enthusiasts and share your weather station data with others from around the world.• Citizen Weather Observer Program. Submit your data to the National Weather Service to help develop improved weather prediction models.• The GLOBE Program. Participate with other schools in an international weather-related program for students from primary to secondary education. <p>System requirements are Windows 2000/XP/Vista/7 - only tested on 32bit.</p>
Contents	The package includes software on CD, serial data logger, and 2.4 metre cable to connect the data logger to your computer.
Specification	Detailed Specification