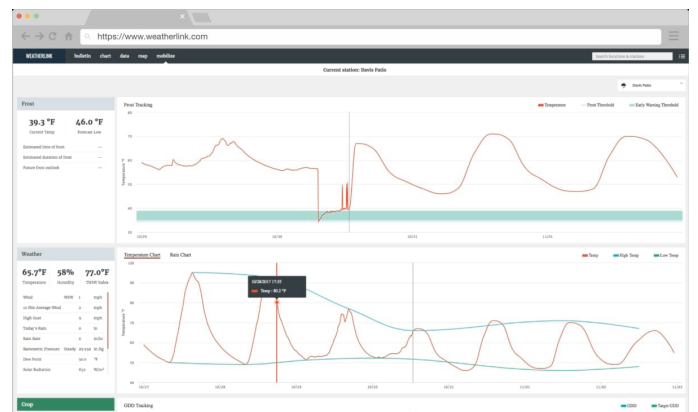
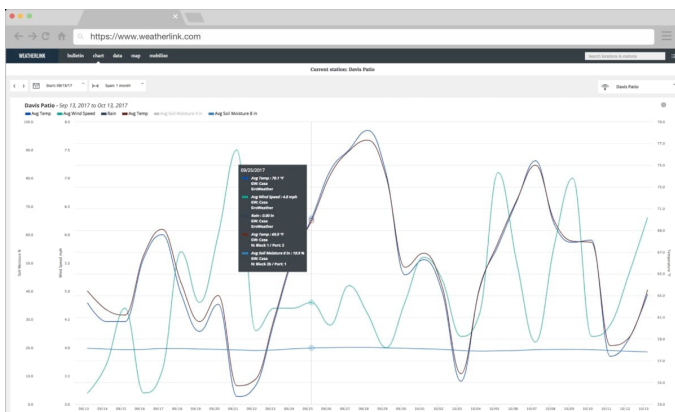




DISCONTINUED: WeatherLink 2.0 Windows SOFTWARE & IP DATA LOGGER

Product Images







and Android)

Description

View and analyse your weather data online anywhere & anytime!

Simply plug the WeatherLink IP data logger into your Vantage Vue/Vantage Pro2 console, or Weather Envoy and start enjoying the benefits of WeatherLink Cloud instantly.

Additional Information

Promotion	This product has been superseded by WeatherLink Live														
Brand	<div>Davis Instruments</div> <div>WeatherLink Cloud: Access Your Real-Time Data Anywhere & Anytime The easiest & fastest way to see your weather data on WeatherLink.com. Simply plug the WeatherLink Data Logger into a wireless or cabled Vantage Pro2 or Vantage Vue console, or Weather Envoy, and connect the cable to your router. WeatherLink Computer Software You don't even need a computer! Within minutes, you'll see your data live in any major browser, whether you're Windows, Mac, or Linux user. Data is uploaded to WeatherLink.com every minute automatically.</div> <div></div> <div>WeatherLink.com 2.0 - New Look, More Features Bulletin with Current Conditions Build and customise your bulletin dashboard to receive current data updates from all of your installed sensors. You can move and resize tiles to see the data just the way you like it. Chart (requires Pro or Pro+ subscription) Visualise any of your sensor data with custom line and bar charts on up to 4 different y-axes. Zoom into an hour of data or out to a full year to view details and trends. Data (requires Pro or Pro+ subscription) Access all of your raw sensor data at the click of a button. You can sort by date/time or data type and export any data set directly to an Excel-friendly .csv file. Map Use the WeatherLink Map to view and interact with the community of public stations in the worldwide WeatherLink Network. Click on a station to see a summary of current data and click the bulletin to see the station's customised weather dashboard. Mobilize (requires Pro or Pro+ subscription) Use the Davis Mobilize App on iOS or Android to create custom frost, weather, crop and irrigation views for web and mobile. It's powerful enough to help avoid losing your farm crop to frost, and fun for the data-savvy backyard gardener looking to perfect their tomato crop. IPM (requires Pro+ subscription) Access Integrated Pest Management (IPM) on Mobilize to link your weather and sensor data to actual pest risk, giving you a powerful new tool in protecting your crops from pest damage. Data in Your Pocket WeatherLink Mobile App brings your data and the Davis WeatherLink Network to your phone. Join the worldwide network of businesses, schools and hobbyists sharing their weather data with the world. WeatherLink lets you see your personal Davis Instruments weather station data and local forecasts, as well as explore other stations from around the world. Enjoy 7-day and hourly forecast, rain, barometer, solar radiation and many more.</div> <div></div> <div>Share Your Data with 3rd-party Weather Sites Automatically upload your data to:<ul style="list-style-type: none">• Weather Underground• CWOP• GLOBE</div> <div></div> <div>Get Your Data to the Cloud Requirements:<ul style="list-style-type: none">• PC turned-on 24/7• WeatherLink Computer Software (included in the package) turned-on 24/7• Internet access• WeatherLink.com Account<p>WeatherLink Cloud stores 4x the amount of data your Data Logger can keep.</p><p>Data Updates:</p><ul style="list-style-type: none">• Your current conditions (Bulletin tab) are updated every 60 seconds.• Your archive data (Data, Chart, Mobilize tabs) are uploaded to the server once an hour. (Example: WeatherLink IP Data Logger with 15-min interval setup will send up data every hour with 4 sets of readings. While a 30-min interval setup will be sent every hour with 2 sets of readings.)<p>Download Your Data from WeatherLink Cloud</p><ul style="list-style-type: none">- A feature built in your WeatherLink Computer Software allows you to download your data from the WeatherLink Cloud to your computer. Simply click on File > Download in your software.- WeatherLink Cloud makes 4x the amount of data on your Data Logger available to you for download.- You can download all your data as long as you do it periodically.<p>Please check the table below to determine how often you should download your data from the cloud to your computer to keep it all.</p><table><tr><td>1 Minute Archive Interval</td><td>..... 7 days</td></tr><tr><td>5 Minute Archive Interval</td><td>..... 32 days</td></tr><tr><td>10 Minute Archive Interval</td><td>..... 68 days</td></tr><tr><td>15 Minute Archive Interval</td><td>..... 104 days</td></tr><tr><td>30 Minute Archive Interval</td><td>..... 212 days</td></tr><tr><td>60 Minute Archive Interval</td><td>..... 424 days</td></tr><tr><td>120 Minute Archive Interval</td><td>..... 852 days</td></tr></table><p>Note that once your account capacity is reached, your data will get overwritten.</p><p>You can also download your data without the use of WeatherLink Computer Software in an easily-readable .csv format anytime from any computer with the use of any major browser with the 'Data' feature available in the paid Pro Tier plan.</p><p>Data Upload</p><ul style="list-style-type: none">- Data logger automatically sends data to WeatherLink.com without connection to a computer.- Your current conditions (Bulletin tab) are updated every 60 seconds.- Your archive data (Data, Chart, Mobilize tabs) are uploaded to the server once an hour. (Example: WeatherLink IP with 15-min interval setup will send up data every hour with 4 sets of readings. While a 30-min interval setup will be sent every hour with 2 sets of readings.)<p>Functional Specifications</p><ul style="list-style-type: none">- Power: 5VDC from console, 0.5 watts maximum consumption- Operating Temperature: -10° to 60° C<p>Compatibility and System Requirements</p><ul style="list-style-type: none">• The data logger requires a console from which to retrieve data. It fits neatly into all the following models: wireless or cabled Vantage Pro2 or Vantage Vue console, or Weather Envoy.<ul style="list-style-type: none">• A router, hub or WiFi extender• Internet access• WeatherLink Computer Software requires Windows XP or above• Not needed for Vantage Connect products• Not compatible with Envoy8X<p>WeatherLink is also available in Serial, USB and Mac OSX versions.</p></div> <div>Contents</div> <div>Explanation</div> <div>Ideal For</div> <div>Specification</div> <div>The package includes WeatherLink 2.0 Computer Software software on a CD (Windows version) and a 5 ft. (1.5 m) cable to connect the data logger to your router, hub or WiFi extender</div> <div>Professional, Education, Amateur, Interested, Gardeners, Agronomy</div> <div>click for Detailed Specification</div>	1 Minute Archive Interval 7 days	5 Minute Archive Interval 32 days	10 Minute Archive Interval 68 days	15 Minute Archive Interval 104 days	30 Minute Archive Interval 212 days	60 Minute Archive Interval 424 days	120 Minute Archive Interval 852 days
1 Minute Archive Interval 7 days														
5 Minute Archive Interval 32 days														
10 Minute Archive Interval 68 days														
15 Minute Archive Interval 104 days														
30 Minute Archive Interval 212 days														
60 Minute Archive Interval 424 days														
120 Minute Archive Interval 852 days														

Additional Options

Add weather related accessories	Weather Observers Handbook
Optional WeatherLink Cloud Pro Subscription (1 Year)	WeatherLink Pro