



Call our friendly team on  
01243 558280

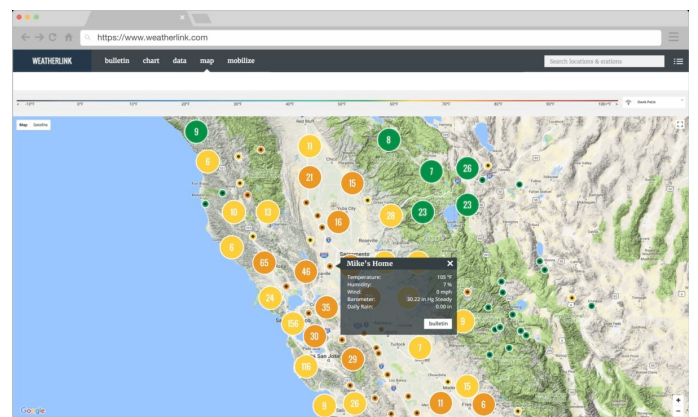
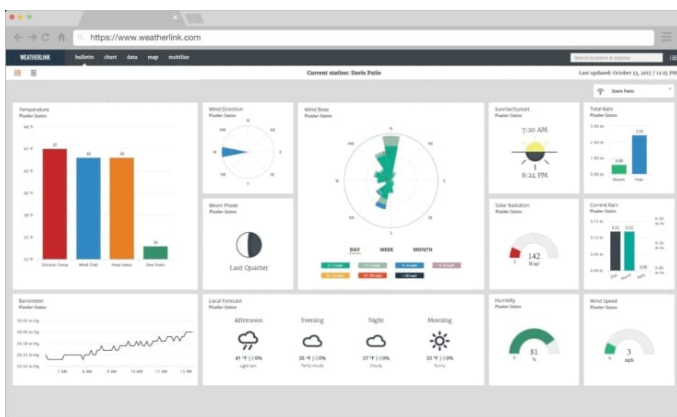
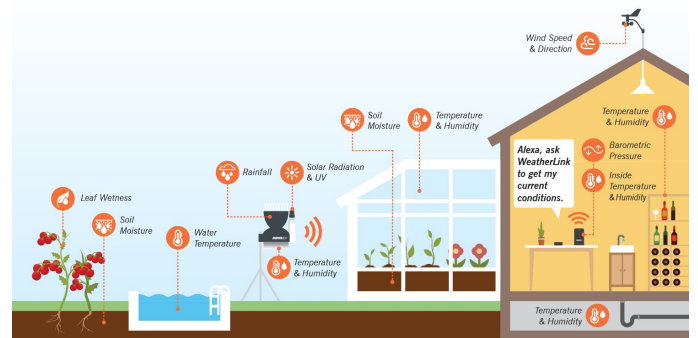
Weather Shop  
Ford Lane Business Park  
Ford, West Sussex  
BN18 0UZ  
[www.weathershop.co.uk](http://www.weathershop.co.uk)

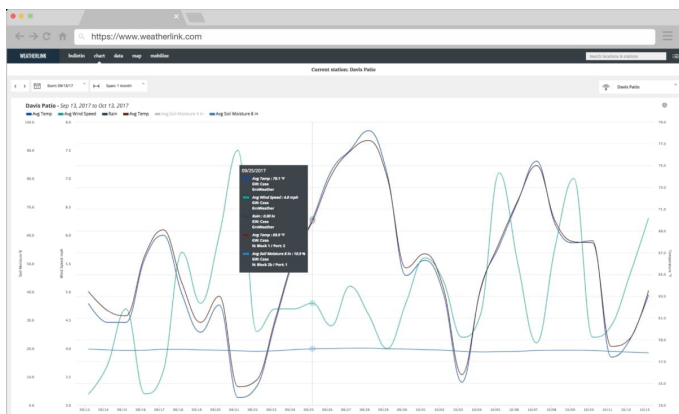


# WeatherLink Live 6100 - Live Stream from any Davis Wireless Weather Station or Sensor Transmitter

## Product Images







## Short Description

Connects via your Wi-Fi or Ethernet directly to the WeatherLink Cloud and WeatherLink mobile apps for iOS and Android.

- Stream live data directly to the Internet (you don't even need a computer or Vantage Pro2/Vantage Vue console!)
- Connect 80+ sensors to one WeatherLink Live (choose from the sensor options below)
- Three sensors integrated within the WeatherLink Live unit (barometric pressure, inside temperature and humidity)
- Up to 1,000 ft. (300 m) transmission distance
- Works with Amazon Alexa and Google Assistant.

### Create a Custom Network of Davis Sensors

Connect up to eight of the following to your WeatherLink Live:

- [Vantage Vue Sensor Suites](#)
- [Vantage Pro2 Wireless Sensor Suites](#)
- [Vantage Vue Weather Stations](#)
- [Vantage Pro2 Weather Stations](#)
- [Wireless Leaf & Soil Moisture/Temperature Stations](#) (connect up to 10 [sensors](#) to each Station)
- [Sensor Transmitters](#) (connect up five [sensors](#) to each Transmitter)

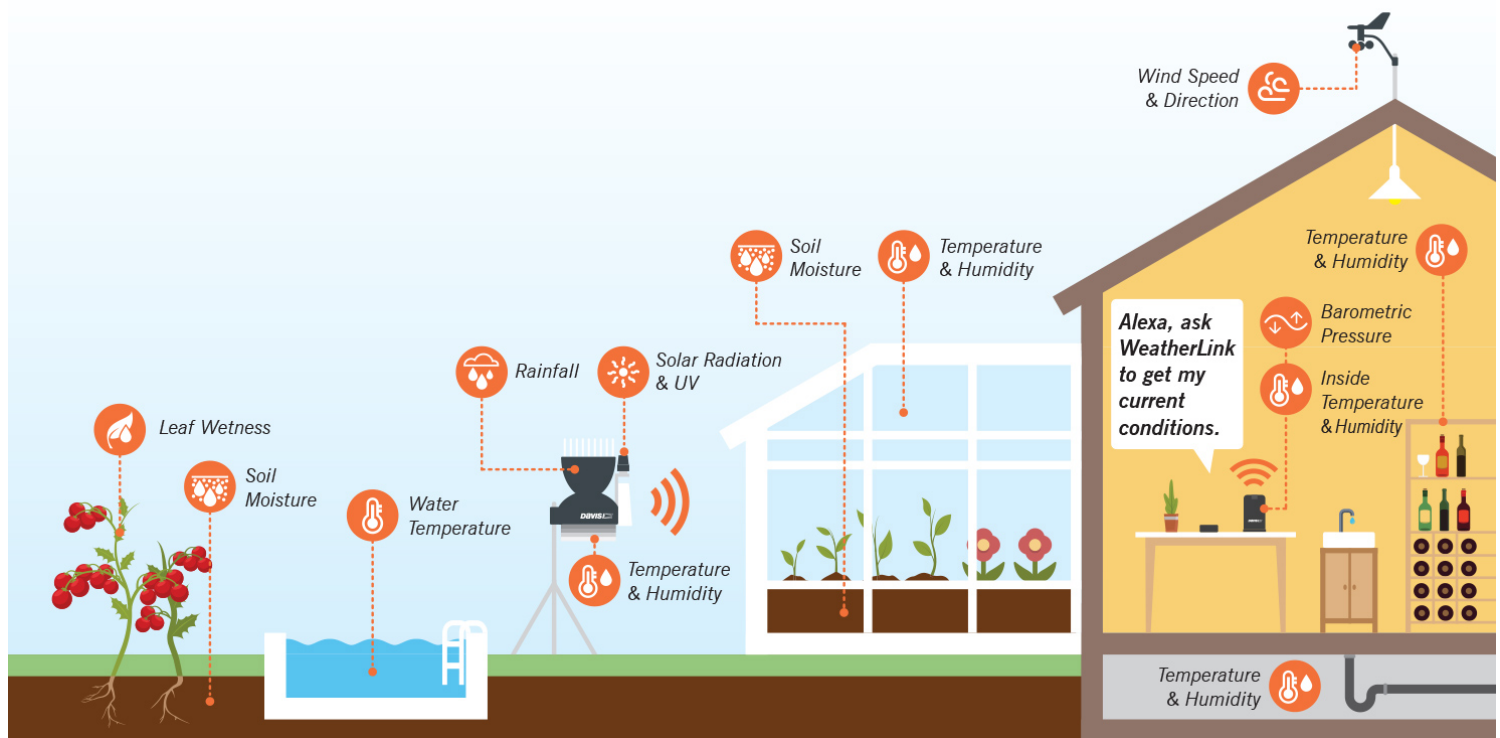
**Want Some Helpful Advice? - Call 01243 558280**

## Description

**Because we are an authorised Davis Service Centre, we provide a FREE THREE YEAR WARRANTY on all Davis products purchased from us.**

## Monitor Your Home Environment

Configure a custom network of over 80 sensors on 8 transmitters, so you can see data from sensors in the garden/greenhouse, children's bedrooms, the loft, basement, pool/fish pond, garage, wine cellar – all with one WeatherLink Live.



Sensor Transmitters are the building blocks of your custom network of sensors. They can be positioned indoors or outdoors and are capable of transmitting data up to 1,000 ft. (300 m). Each transmitter can support up to five sensors, including an Anemometer, Rain Collector, Temperature Probe or Temperature & Humidity Sensor, UV Sensor and Solar Radiation Sensor.

### Amazon Alexa Integration

- To use WeatherLink Live with Amazon Alexa, simply enable the WeatherLink skill, then just say, "Alexa, ask WeatherLink to get my current conditions."

### Welcome to the Smart Home

- Connect your data to smart irrigation systems or other IoT/smart home devices.

### Securely share your data

- Contribute your weather data to the global WeatherLink community.
- Share data with friends, family, or co-workers via the WeatherLink website and mobile applications.
- Upload to a growing list of third-party sites like Weather Underground or CWOP.
- Build your own weather tools with the powerful suite of WeatherLink API products.

### Enjoy real-time data

- Experience the fastest reporting weather data on the market, with any personal device. Use the WeatherLink iOS or Android app to watch wind gusts and direct changes as they occur. While on Wi-Fi, your WeatherLink app will receive data every 2.5 seconds; your data will upload to WeatherLink.com every minute.

### Never lose data

- Safeguard recorded data with WeatherLink Live's internal auxiliary memory.
- Protect against data loss with redundant battery backup.

### Effortless setup

- Simple Bluetooth setup using the WeatherLink app.
- No Wi-Fi? No problem. Easily connect to Ethernet with the included cable.

### Long-range wireless data

- Depend on Davis's industry-leading, proprietary, frequency-hopping, spread spectrum radio to transmit data up to 1,000 ft. (300 m).

Comes Wi-Fi ready, with a 2 metre power cable, and also a 1.5 metre Ethernet cable; if you prefer a wired connection.

## WeatherLink Live Internal Sensors

### Barometric Pressure

Resolution and Units: 0.01" Hg, 0.1 mm, 0.1 hPa, 0.1mb. (user selectable)

Range: 16.00" to 32.50" Hg, 410 to 820 mm Hg, 540 to 1100 hPa or mb

Elevation Range: -1500' to +15,300' (-460 m to 4670 m)

Update Interval: 1 minute

### Inside Relative Humidity

Resolution: 0.1%

Range: 1 to 100% RH

Accuracy:  $\pm 2\%$

Update Interval: 1 minute

### Inside Temperature

Resolution: Current Data: 0.1°

Range: -32° to +140°F (0° to +60°C)

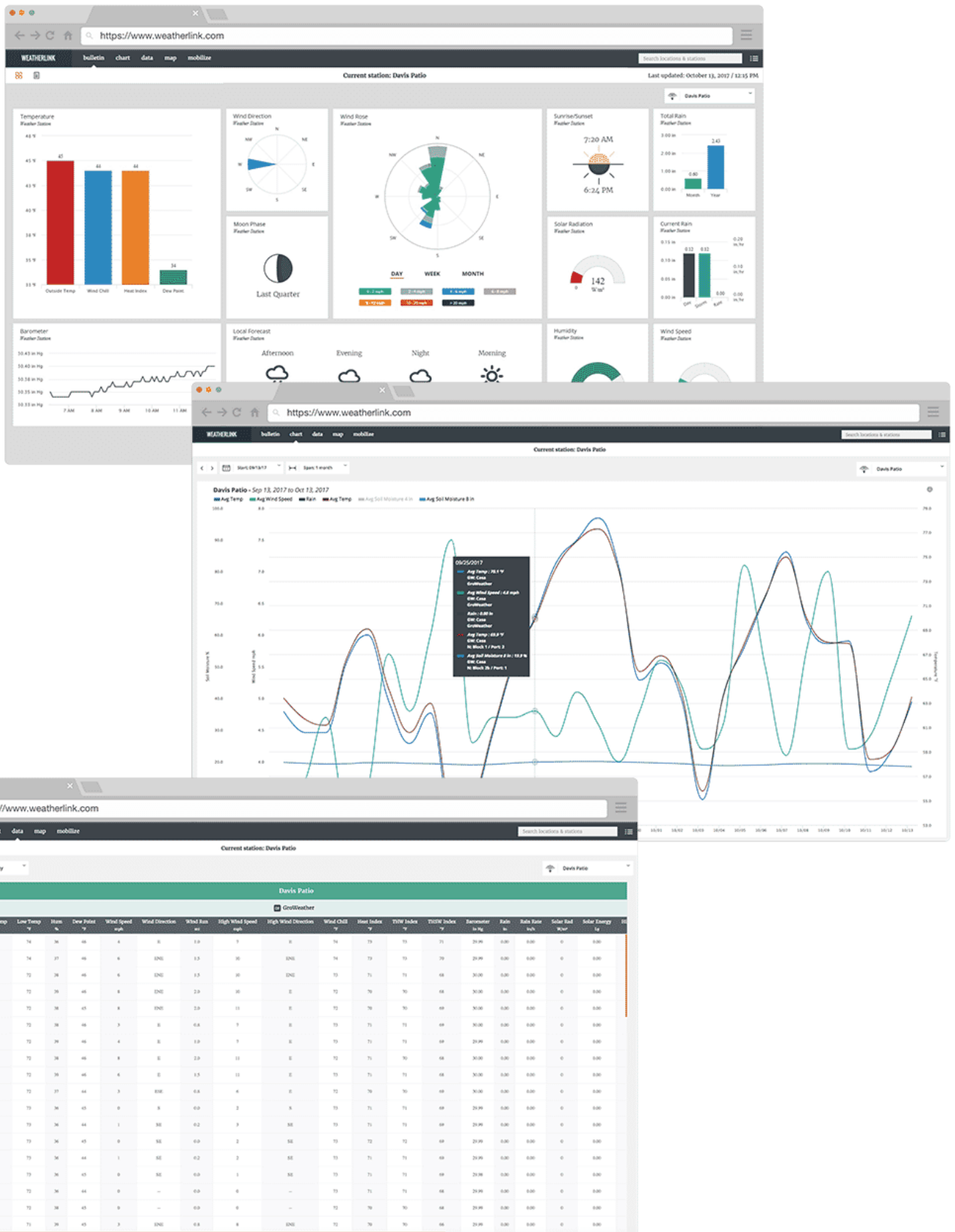
Sensor Accuracy:  $\pm 0.5^\circ\text{F}$  ( $\pm 0.3^\circ\text{C}$ ) (typical)

Update Interval: 1 minute

## Access Your Real-time Data Anywhere & Anytime

Your personal WeatherLink.com page gives you current condition readings for – Temperature, Humidity, Barometer, Wind Speed, Current Rain, Wind Direction, Total Rain, Rain Rate, Solar Radiation, Wind Rose, Local Forecast, Sunrise/Sunset, Moon Phase.

With **WeatherLink Pro**, you can also store, read and graph your historical data.



### Bulletin with Current Conditions

Build and customise your bulletin dashboard to receive current data updates from all of your installed sensors. You can move and resize tiles to see the data just the way you like it.



**Chart (requires Pro or Pro+ subscription)**

Visualise any of your sensor data with custom line and bar charts on up to 4 different y-axes. Zoom into an hour of data or out to a full year to view details and trends.

**Data (requires Pro or Pro+ subscription)**

Access all of your raw sensor data at the click of a button. You can sort by date/time or data type and export any data set directly to an Excel-friendly .csv file.

**Map**

Use the WeatherLink Map to view and interact with the community of public stations in the worldwide WeatherLink Network. Click on a station to see a summary of current data and click the bulletin to see the station’s customised weather dashboard.

**Mobilize (requires Pro or Pro+ subscription)**

Use the Davis Mobilize App on iOS or Android to create custom frost, weather, crop and irrigation views for web and mobile. It’s powerful enough to help avoid losing your farm crop to frost, and fun for the data-savvy backyard gardener looking to perfect their tomato crop.

**IPM (requires Pro+ subscription)**

Access Integrated Pest Management (IPM) on Mobilize to link your weather and sensor data to actual pest risk, giving you a powerful new tool in protecting your crops from pest damage.

**Data in Your Pocket**

WeatherLink Mobile App brings your data and the Davis WeatherLink Network to your phone. Join the worldwide network of businesses, schools and hobbyists sharing their weather data with the world. WeatherLink lets you see your personal Davis Instruments weather station data and local forecasts, as well as explore other stations from around the world. Enjoy 7-day and hourly forecast, rain, barometer, solar radiation and many more.



# Share Your Data with 3rd-party Weather Sites

Automatically upload your data to:

- Weather Underground
- CWOP
- GLOBE

## Download Your Data from WeatherLink.com

You can download your data in an easily-readable .csv format anytime from any computer with the use of any major browser with the 'Data' feature available in the paid WeatherLink.com Pro Tier plan.

**Note:** WeatherLink Live is not compatible with WeatherLink Computer Software.

## Additional Information

Country of Manufacture	United States
Brand	Davis Instruments
Contents	1 x WeatherLink Live 1 x 6.5 ft. (2 m) power cable 1 x optional 5 ft. (1.5 m) Ethernet cable Instruction manual
Ideal For	Professional, Education, Amateur, Interested, Gardeners, Agronomy



## Additional Options

<b>Wireless Integrated Sensor Suite (ISS) Bundle Options</b>	Vantage Vue ISS & WeatherLink Live Bundle (DI-6110)
	Vantage Pro 2 ISS & WeatherLink Live Bundle (DI-6112)
	Vantage Pro2 ISS & Display Console & WeatherLink Live Bundle (6122UK)
<b>Optional WeatherLink Cloud Pro Subscription</b>	WeatherLink Pro (1 Year Subscription)
	WeatherLink Pro (3 Year Subscription)
<b>Soil / Leaf Monitoring Options</b>	Soil / Leaf Station - Incl. 4 soil moisture sensors & 4 temp sensors (DI-6345CSOV)
	Soil / Leaf Station - No sensors included (DI-6345OV)
	Soil Moisture Sensor (DI-6440)
	Leaf Wetness Sensor (DI-6420)
	Soil/Water/Air Temperature Sensor (Stainless Steel) (DI-6470)
<b>Stand-Alone Sensor Options (Hold down Ctrl key to select multiple options)</b>	AirLink Indoor/Outdoor Air Quality Monitor
	Wireless Solar-Powered Sensor Transmitter (DI-6332OV)
	Air Temperature & Humidity Sensor with Solar Radiation Shield (DI-6830)
	Air/Water/Soil Temperature Probe (Stainless Steel) (DI-6475)
	Air/Water/Soil Temperature Probe (Plastic) (DI-6477)
	Anemometer (DI-6410)
<b>Mounting Options</b>	Universal Mounting Pole Kit (WS-7717) (Limited Offer)!
	Universal Crank-shaped Mounting Pole Kit (WS-7715-CRANK)
	Davis Mounting Pole Kit (DI-7717)
	Davis EZ-Mount Tripod (DI-7716-00)