



Call our friendly team on  
01243 558280

Weather Shop  
Ford Lane Business Park  
Ford, West Sussex  
BN18 0UZ  
www.weathershop.co.uk



# Two Screen Bundle - ACCUR8 DWS7100 7-in-1 Complete Solar-Powered WiFi Weather Station with Light Intensity, UV Monitoring & Weather Alerts

## Product Images





## Short Description

Get all the features of the awesome DWS7100, with twice as many opportunities to observe it's data!

Imagine having one display screen in our kitchen & the other in your bedroom. You could even make yourself very popular with your neighbour and give them one of the screens!

The ACCUR8 7-in-1 colour Wi-Fi weather station combines a unique compact design with the ability to publish your weather conditions online via WiFi connection. View your weather on the colour display, mobile app or online!

## Description

---

**Special  
Mounting  
Pole Offer  
Today**



**Special  
Mounting  
Pole Offer  
Today**



## **Special Offer - Mounting Pole Kit**

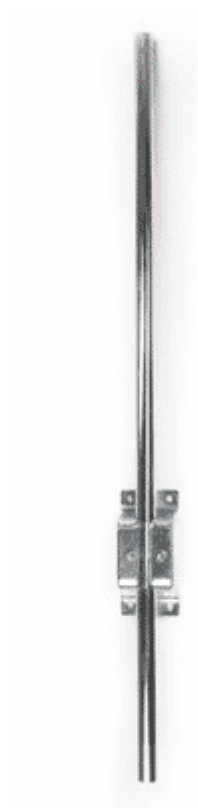
**Normally £44.95**

**Price today £19.99**

We're providing our top-selling mounting pole kit at a very special price when you purchase this weather station.

Many customers prefer to secure their wireless sensor units to various structures, including fences, sheds, and houses. Often, after the initial purchase, they discover the difficulty in finding a suitable pole locally, which leads them back to acquire ours. In view of this, we decided to offer a special 'complete weather station package' deal on the mounting pole.

Special  
Mounting  
Pole Offer  
Today



Special  
Mounting  
Pole Offer  
Today



## Special Christmas Offer - Mounting Pole Kit

Normally £44.95

**Price today £19.98**

For a limited period, we're providing our top-selling mounting pole kit at a very special price when you purchase this weather station.

Many customers prefer to secure their wireless sensor units to various structures, including fences, sheds, and houses. Often, after the initial purchase, they discover the difficulty in finding a suitable pole locally, which leads them back to acquire ours. In view of this, we decided to offer the mounting pole in a Christmas special package. This addition would be especially convenient for those gifting the weather station, enabling the recipients to install it immediately if they wish.

---

## Outdoor Wireless Unit

The integrated wireless suite gathers key environmental data from its 7 sensors for wind speed, wind direction, humidity, temperature, and rainfall and transmits this to your indoor base station to display.





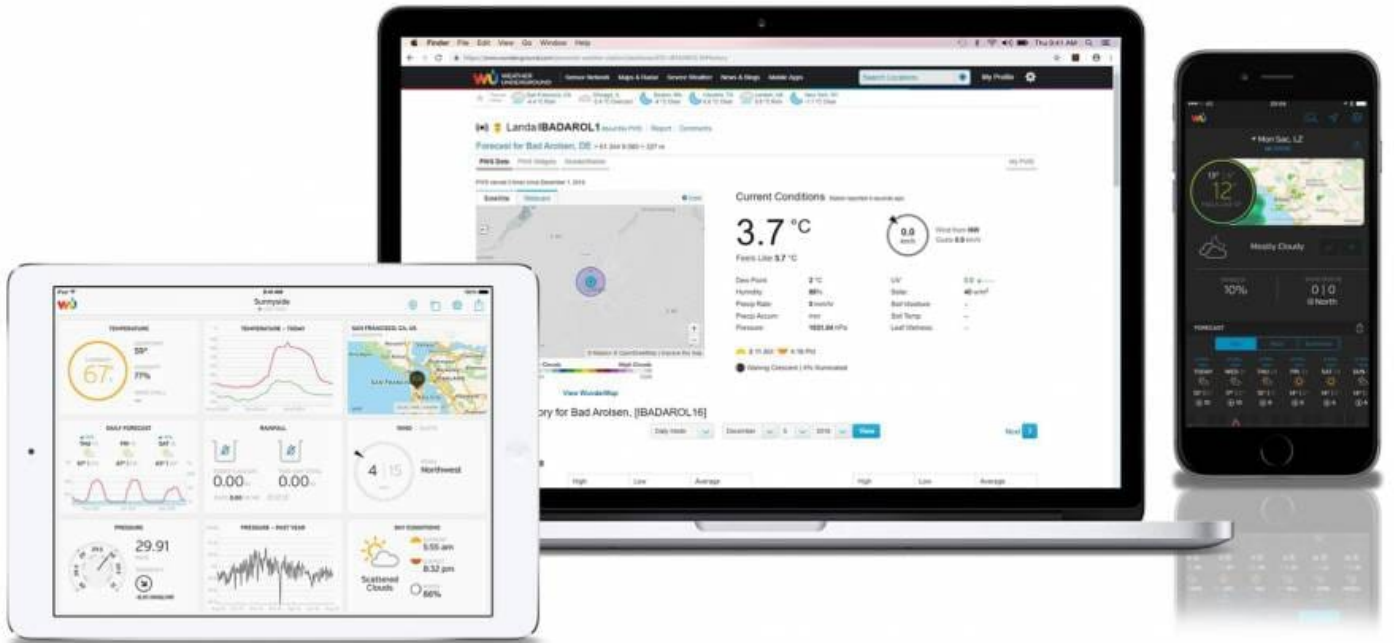
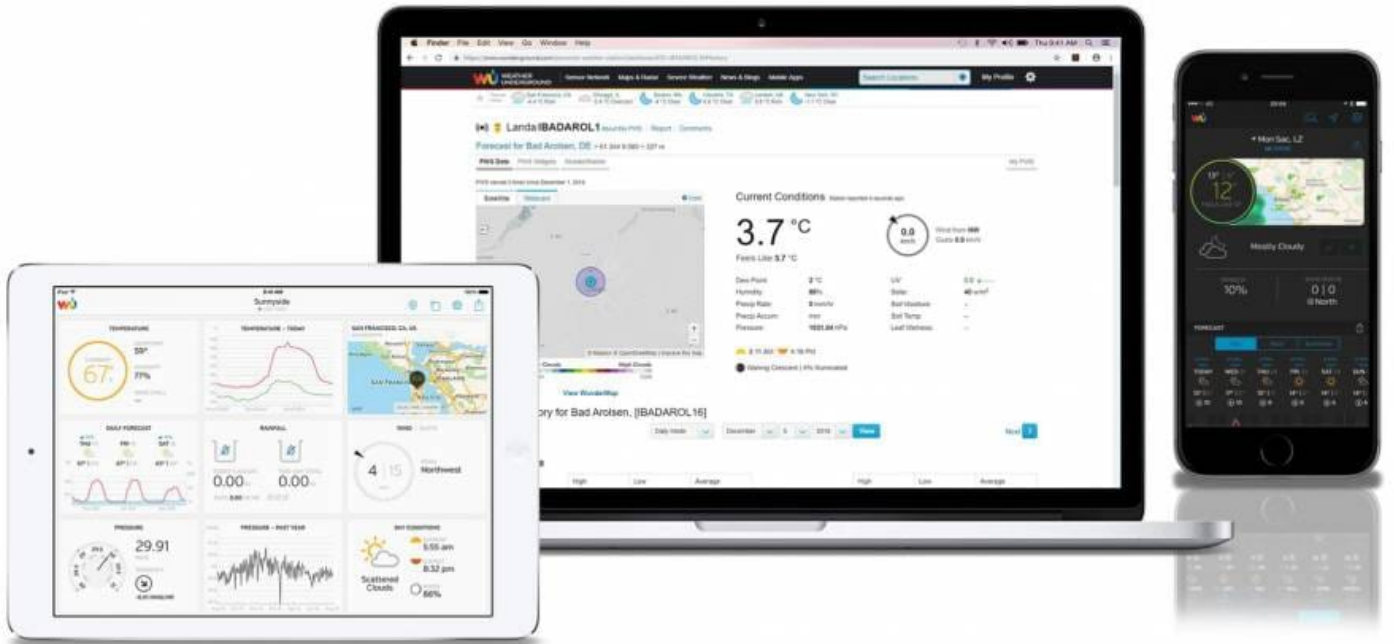
## Weather Console

Designed to efficiently display all the sensor readings in a concise and easy-to-read format.

The in built barometer also displays a graphical weather forecast along with trends in temperature.

## WiFi Connected

With a Wi-Fi connection, the base unit can be linked to either of two online services. This connectivity option enables you to access real-time data on different devices such as your computer or tablet. Additionally, these services offer mobile apps which allow you to view live data on your smartphone.







## Programable Weather Alarms

The device is equipped with customisable alarms, specially designed to keep you informed about any significant changes in weather conditions that interest you.

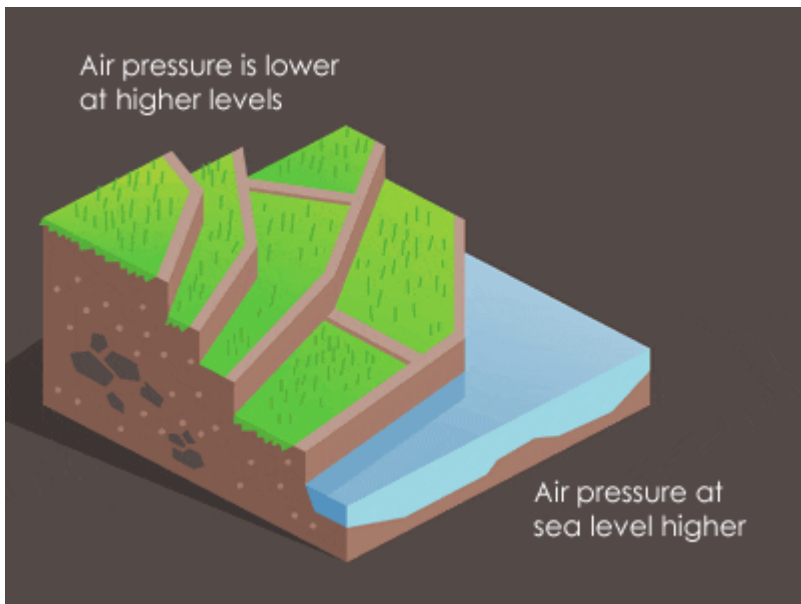
Set alarms for high and low, temperatures/humidity levels, both indoor and outdoor. Ideal for **ice**. Along with the capabilities to detect and alarm you in cases of **rainfall** and **high wind** speeds, ensuring you stay updated about the weather conditions in real time.

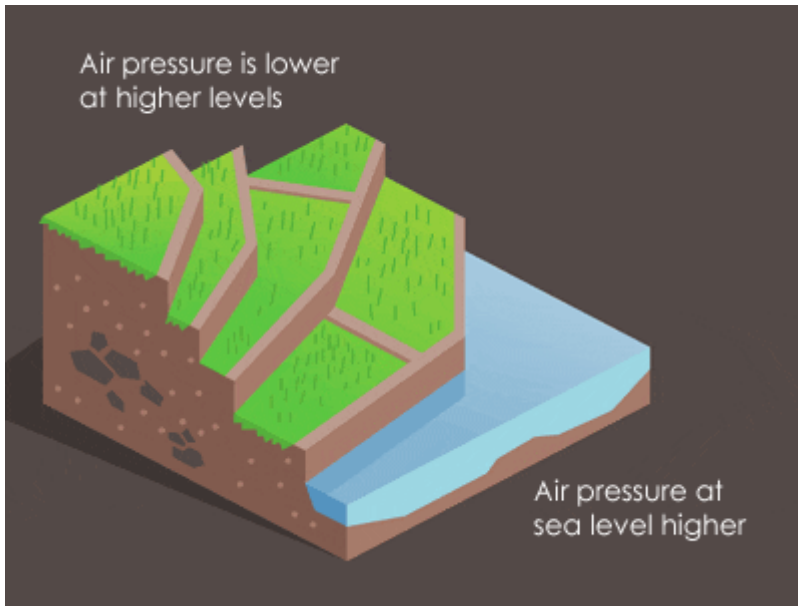
---

## Two Display Screens Included

Access your weather data in two different rooms! The additional console allows you to monitor the weather from the comfort of your kitchen, study, or any other room you choose.

In addition, each console will display the specific temperature and humidity for the room it is placed in. You could set different alarms on each console to be triggered by high/low indoor temperature/humidity.





## Adjustable Barometer

This station allows you to adjust the pressure to your preferred preference.

### Absolute Barometric Pressure:

- It is the atmospheric pressure measured at the exact location without any adjustments.
- It represents the real air pressure exerted at a specific place and time.
- Also known as station pressure.

### Relative Barometric Pressure:

- It is a pressure reading adjusted to what it would be at sea level, useful for comparison across different elevations.
- Most commonly reported in weather forecasts.
- Despite lower absolute pressure at higher altitudes, relative pressure normalizes these readings to sea level for consistency.
- Also referred to as sea-level corrected pressure.

## You're in Safe hands

Having been in the business of selling weather equipment for more than two decades, we have dispatched over 18,000 orders just in the past twelve months.

As the owners of the ACCUR8 brand, you can rest easy knowing that you are supported by a UK-based company that has a great depth of knowledge and consistent customer support.

As a family-owned enterprise, we take pride in being the UK's leading independent weather specialist.

## Two Year Warranty as Standard

With our own brand ACCUR8, we offer a hassle-free 2-year warranty with no need for filling out paperwork or submitting online registrations. You automatically receive the 2-year warranty upon purchase.

In the event that issues arise after the warranty period ends, we understand that you may require assistance

or replacement parts. We have you covered – we offer all parts, including the console, at special discounted prices for customers who have purchased from us.

---



## Retail Packaged

In contrast to many online brands, our ACCUR8 products are presented in attractive retail-style packaging. Say goodbye to plain white or brown boxes when gifting this item to a loved one. Additionally, it comes with a 3-Pin UK power supply, eliminating the need for uncommon EU adapter plugs often found in online purchases nowadays.

---

## Key Features at a Glance

- Connects to the Internet via your home WiFi. (Uses the 2.4 GHz WiFi Frequency. The video below shows you how to enable 2.4 GHz on your home WiFi router).
- Weather conditions can be uploaded to popular weather websites [www.wunderground.com](http://www.wunderground.com) and / or [Weathercloud.net](http://Weathercloud.net).

- View your live weather data on your Android or iOS mobile device via the Wunderground app.
  - As the outdoor sensor suite is solar-powered, you won't need to access it nearly as much as the battery-powered sensors that come with most other weather stations.
  - Weather forecast depicted by four graphic symbols
  - Indoor temperature (0°C to 60°C) and humidity (10% to 99%)
  - Outdoor temperature (-40°C to 60°C) and humidity (10% to 99%)
  - Outdoor temperature High/Low alarm
  - Light intensity (0 to 200klux)  
UV Index (1 to 15+) (UVA & UVB)
  - Wind direction and speed, plus separate wind gust display (0 to 50 m/s) (m/s; km/h; Knots; mph).
  - Beaufort index (scale for classifying wind strengths)
  - Rainfall (0 to 9999mm) with history (day / week / month)
  - Air pressure (relative and absolute) (300 to 1100 hpa)
  - Wind chill and 'Feels like'
  - Dew point
  - Apparent Temperature
  - Moon phase
  - Two time alarms with snooze function (5 minutes)
  - Min/max memory (up to 24 hours)
  - The clock always shows the correct time, as it automatically synchronises via the Internet
  - LED backlight
  - Display console has wall bracket and table stand
  - Includes one remote temperature & humidity sensor, for monitoring an additional indoor/outdoor area
  - Expandable - Monitor children's bedrooms/greenhouse etc with up to eight remote temperature & humidity sensors.
- 

# Klarna.

0% over 3 months

# Klarna.

0% over 3 months

## Flexible Payments

We've partnered with Klarna to offer you the convenience of spreading your payments over three months, and what's more, it's interest-free. Simply select Klarna as your payment option in the checkout.

---

## Next Day Delivery

We ship orders from Monday to Friday, and if you require expedited delivery, you can choose the next-day delivery option when placing your order before 2:30pm today.





---

## Understanding 2.4 and 5 GHz WiFi Frequencies

People often assume 5 GHz is better, like comparing 4G with 5G, but this is completely incorrect; they are designed for different needs.

Many WiFi enabled devices, such as weather stations, utilise the 2.4 GHz band as it offers greater coverage. Unlike tablets, phones, or gaming consoles, these devices consume minimal broadband width and data, making the 2.4 GHz band a more suitable choice due to its longer range. The 5 GHz band, on the other hand, is designed to deliver high speeds, perfect for video streaming and gaming, the trade off its coverage is more limited.

All mainstream broadband providers and routers offer dual-band options, allowing you to have both the 2.4 GHz and 5 GHz bands activated simultaneously. This feature enables you to configure your devices in the most optimal way, meeting their individual requirements.

## WiFi Setup Connection

---

## Additional Information

Brand	ACCUR8
Contents	<ul style="list-style-type: none"><li>• 2 x Indoor base station/display console with integrated stand</li><li>• Remote temperature and humidity sensor</li><li>• 7-in-1 multi outdoor sensor suite</li><li>• Short mounting pole kit</li><li>• 2 x Power adaptor for display units with UK 3 pin plug and cable</li><li>• User manual</li></ul>
Ideal For	Education, Amateur, Interested, Gardeners
Dimensions	Display console: 215 x 158 x 22 mm
Power	Display console: mains power, with battery backup (3 x AAA batteries (not included))
Sensors	<ul style="list-style-type: none"><li>• The 7-in-1 outdoor sensor suite includes sensors for wind speed, wind direction, humidity, temperature, precipitation, light intensity and ultra-violet light (UV)</li><li>• Wireless transmission range to display console: up to 100 metres (line of sight)</li><li>• RF frequency: 433 MHz</li></ul>
Dimensions	Outdoor sensor suite: 330 x 280 x 150 mm
Power	Outdoor sensor suite: solar powered, with battery backup power (3 x AA batteries (not included)) Remote temperature & humidity sensor: 2 x AAA batteries (not included)
Installation	The very compact and multifunctional outdoor sensor requires only a small space. A pipe clamp and screws are already included for attachment to poles (pipe diameter of about 25-33 mm), such as the optional Universal Mounting Pole Kit.



## Product Options

### Station Model



#### **ACCUR8 DWS7100 7-in-1 Complete Solar-Powered WiFi Weather Station with Light Intensity, UV Monitoring & Weather Alerts**

View your weather on the colour display, mobile app or online! The ACCUR8 7-in-1 colour Wi-Fi weather station combines a unique compact design with the ability to publish your weather conditions online via WiFi connection.

### Extra Display Console



#### **ACCUR8 Display Console for DWS7100**

Additional or replacement display console.  
Add a second display to a different room in your house!  
You could even give one to your neighbour, so they can also view the weather data from your outdoor sensor unit (provided the console is safely within range - up to 100 metres line of sight).

## Additional Options

### **Add Optional Additional Sensors (Up to a Total of 8)**

Wireless Temperature & Humidity Sensor (A8-FT007TH)

Wireless Temperature Sensor with Wired Temperature Probe (A8-F007TP)

Wireless Floating Pool/Spa/Pond Thermometer (A8-F007PF )

### **Mounting Options**

Universal Mounting Pole Kit (WS-7717) - Limited Offer

Universal Crank-shaped Mounting Pole Kit (WS-7715-CRANK)