



Call our friendly team on  
01243 558280

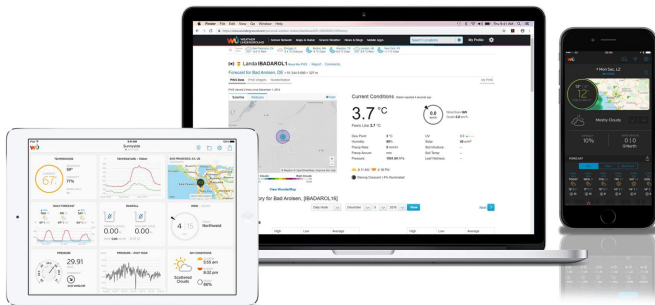
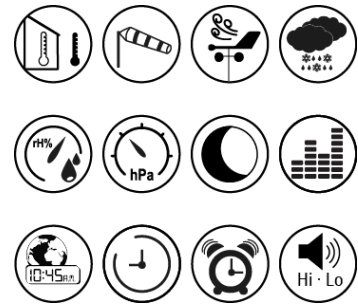
Weather Shop  
Ford Lane Business Park  
Ford, West Sussex  
BN18 0UZ  
[www.weathershop.co.uk](http://www.weathershop.co.uk)



# Two Screen Bundle - DWS5100 5-in-1 Complete Solar-Powered WiFi Weather Station with Weather Alerts

## Product Images





## Short Description

---

Get all the features of the awesome DWS5100, with twice as many opportunities to observe it's data!

Imagine having one display screen in our kitchen & the other in your bedroom. You could even make yourself very popular with your neighbour and give them one of the screens!

View your weather on the colour display, mobile app or online! The ACCUR8 DWS5100 5-in-1 Solar-Powered Wi-Fi weather station combines a modern compact design with the ability to publish your weather conditions online via Wi-Fi connection.

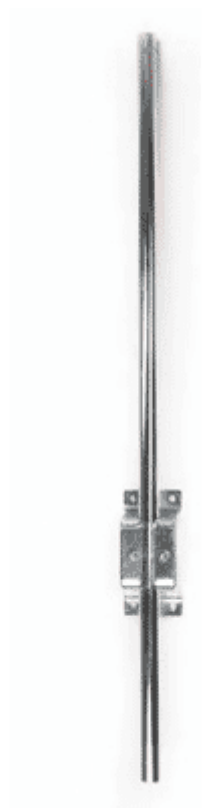
## Description

---

Special  
Mounting  
Pole Offer  
Today



**Special  
Mounting  
Pole Offer  
Today**



## **Special Offer - Mounting Pole Kit**

**Normally £44.95**

**Price today just £19.99**

For a limited period, we're providing our top-selling mounting pole kit at a very special price when you purchase this weather station.

Many customers prefer to secure their wireless sensor units to various structures, including fences, sheds, and houses. Often, after the initial purchase, they discover the difficulty in finding a suitable pole locally, which leads them back to acquire ours. In view of this, we decided to offer the mounting pole in a Christmas special package. This addition would be especially convenient for those gifting the weather station, enabling the recipients to install it immediately if they wish.

---

## **Outdoor Wireless Unit**

The integrated wireless suite gathers key environmental data from its 5 sensors for wind speed, wind direction, humidity, temperature, and rainfall and transmits this to your indoor base station to display.







## Weather Console

Designed to efficiently display all the sensor readings in a concise and easy-to-read format.

The built-in barometer also displays a graphical weather forecast along with trends in temperature.

# WiFi Connected

With a Wi-Fi connection, the base unit can be linked to either of two online services. This connectivity option enables you to access real-time data on different devices such as your computer or tablet. Additionally, these services offer mobile apps which allow you to view live data on your smartphone.





## Programable Weather Alarms

The device is equipped with customisable alarms, specially designed to keep you informed about any significant changes in weather conditions that interest you.

Set alarms for high and low, temperatures/humidity levels, both indoor and outdoor. Ideal for **ice**. Along with the capabilities to detect and alarm you in cases of **rainfall** and **high wind** speeds, ensuring you stay updated about the weather conditions in real time.

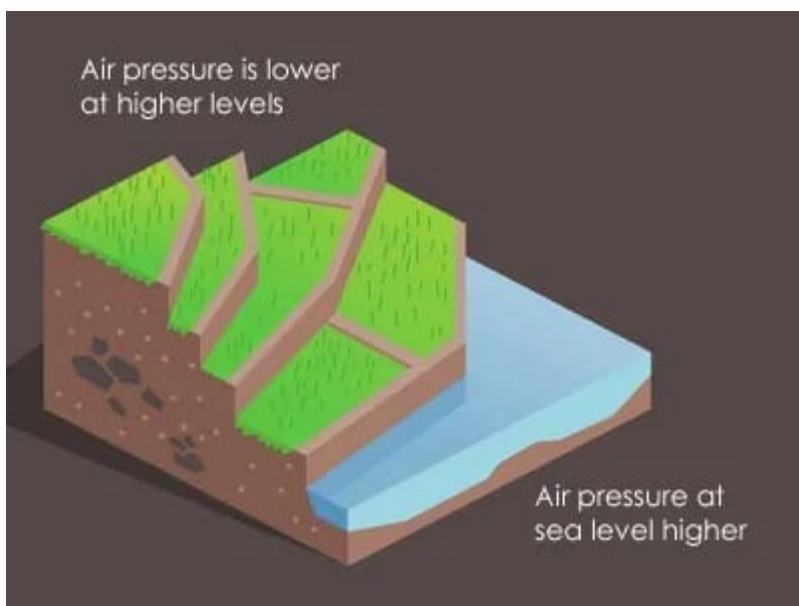
---

## Two Display Screens Included

Access your weather data in two different rooms! The additional console allows you to monitor the weather from the comfort of your kitchen, study, or any other room you choose.

And of course, each console will display the specific temperature and humidity for the room it is placed in. You could set different alarms on each console to be triggered by high/low indoor temperature/humidity.







## Adjustable Barometer

The device is equipped with customisable alarms, specially designed to keep you informed about any significant changes in weather conditions that interest you.

Set alarms for high and low, temperatures/humidity levels, both indoor and outdoor. Ideal for **ice**. Along with the capabilities to detect and alarm you in cases of **rainfall** and **high wind** speeds, ensuring you stay updated about the weather conditions in real time.

---

## You're in Safe Hands

Having been in the business of selling weather equipment for more than two decades, we have dispatched over 18,000 orders just in the past twelve months.

As the owners of the ACCUR8 brand, you can rest easy knowing that you are supported by a UK-based company that has a great depth of knowledge and consistent customer support.

As a family-owned enterprise, we take pride in being the UK's leading independent weather specialist.

## 2 Year Warranty as Standard

With our own brand ACCUR8, we offer a hassle-free 2-year warranty with no need for filling out paperwork or submitting online registrations. You automatically receive a 2-year warranty upon purchase.

In the event that issues arise after the warranty period ends, we understand that you may require assistance or replacement parts. We have you covered – we offer all parts, including the console, at special discounted prices for customers who have purchased from us.



## Retail Packaged

In contrast to many online brands, our ACCUR8 products are presented in attractive retail-style packaging. Say goodbye to plain white or brown boxes when gifting this item to a loved one. Additionally, it comes with a 3-Pin UK power supply, eliminating the need for uncommon EU adapter plugs often found in online purchases nowadays.

## Key Features at a Glance

- Connects to the Internet via your home WiFi. (Uses the 2.4 GHz WiFi Frequency. The video below shows you how to enable 2.4 GHz on your home WiFi router)
- Publish your weather conditions to popular weather websites [www.wunderground.com](http://www.wunderground.com) and/or Weathercloud.net
- View your live weather data on your Android or iOS mobile device with the Wunderground app
- As the outdoor sensor suite is solar-powered, you won't need to access it nearly as much as the battery-powered sensors that come with most other weather stations
- The display console displays a wide range of measurements and historical data

- Indoor temperature (0°C – 60°C) and humidity (1 – 99%)
  - Outdoor temperature (-40°C – 60°C) and humidity (1 – 99%)
  - Wind direction and speed (0 – 112 mph, 50 m/s, 180km/h, 97 knots)
  - Rainfall (0 – 9999mm) with history (hourly, daily, weekly, monthly, total rainfall)
  - Weather forecast (sunny, partly cloudy, cloudy, rainy)
  - Moon phase
  - Barometric pressure in relative or absolute readings (hPa, inHg, mmHg) (300 – 1100hPa)
  - Dew point
  - 'Feels like' temperature (a combination of Heat Index and Wind Chill)
  - Programmable alarms for weather extremes including: indoor temperature/indoor humidity/outdoor temperature/outdoor humidity/rainfall/wind speed
  - Max/Min memory records and past 24 hours (hourly record)
  - Time, calendar, weekday
  - The clock always shows the correct time, as it automatically synchronises via the Internet
  - Two time alarms with snooze function
  - 3 levels of display brightness (backlight can also be turned off)
  - Wall-hanging or free-standing display console
  - Supports firmware updates.
- 

# Klarna.

0% over 3 months

# Klarna.

0% over 3 months

## Flexible Payments

We've partnered with Klarna to offer you the convenience of spreading your payments over three months, and what's more, it's interest-free. Simply select Klarna as your payment option in the checkout.

---

## Next Day delivery

We ship orders from Monday to Friday, and if you require expedited delivery, you can choose the next-day delivery option when placing your order before 2:30pm today.



---

## Understanding 2.4 and 5 GHz WiFi Frequencies

People often assume 5 GHz is better, like comparing 4G with 5G, but this is completely wrong; they are designed for different needs.

Many WiFi enabled devices, such as weather stations, utilise the 2.4 GHz band as it offers greater coverage.



Unlike tablets, phones, or gaming consoles; these devices consume minimal broadband width and data, making the 2.4 GHz band a more suitable choice due to its longer range. The 5 GHz band, on the other hand, is designed to deliver high speeds, perfect for video streaming and gaming, the trade off its coverage is more limited.

All mainstream broadband providers and routers offer dual-band options, allowing you to have both the 2.4 GHz and 5 GHz bands activated simultaneously. This feature enables you to configure your devices in the most optimal way, meeting their individual requirements.

## WiFi Setup Connection

---

# Additional Information

Brand	ACCUR8
Contents	<ul style="list-style-type: none"><li>• 2 x Indoor display console with integrated stand</li><li>• 5-in-1 multi-sensor suite with mounting materials</li><li>• Short mounting pole</li><li>• 2 x Power adaptor for display console, with UK 3 pin plug and cable</li><li>• User manual</li></ul>
Ideal For	Amateur, Interested, Gardeners
Dimensions	Display console: 135 x 26 x 96mm
Power	Display console: mains power, with battery backup power (3 x AAA batteries (not included))
Sensors	<ul style="list-style-type: none"><li>• The 5-in-1 outdoor sensor suite includes sensors for wind speed, wind direction, humidity, temperature and precipitation</li><li>• Wireless transmission range to base station: up to 100 metres (line of sight)</li><li>• Data transmission interval: 16 seconds</li><li>• RF frequency: 433 MHz</li></ul>
Dimensions	Outdoor sensor suite: 330 x 150 x 280mm
Power	Outdoor sensor suite: solar powered, with battery backup power (3 x AA batteries (not included))
Installation	The compact, multifunctional outdoor sensor suite comes with a stand that can be mounted vertically or horizontally as well as a pipe clamp and screws so you can also attach it to a pole, such as is included with the optional Universal Mounting Pole Kit.

# Product Options

## A8-DWS5100



### ACCUR8 DWS5100 5-in-1 Solar-Powered WiFi Weather Station with Weather Alerts - Connects to Wunderground.com & Mobile App

View your weather on the colour display, mobile app or online! The ACCUR8 DWS5100 5-in-1 Solar-Powered Wi-Fi weather station combines a modern compact design with the ability to publish your weather conditions online via Wi-Fi connection.

## Extra Display Console



### ACCUR8 Display Console for DWS5100

Additional or replacement display console.  
Add a second display to a different room in your house! You could even give one to your neighbour, so they can also view the weather data from your outdoor sensor unit (provided the console is safely within range - up to 100 metres line of sight).

# Additional Options

## Mounting Options

Universal Mounting Pole Kit (WS-7717) - Limited Offer

Universal Crank-shaped Mounting Pole Kit (WS-7715-CRANK)